

## **EXTENSION SPINDLES TELESCOPIC AND RIGID FOR GATE VALVES, SERVICE VALVES AND BUTTERFLY VALVES**

### **Application:**

Hydrex extension spindles are produced for ease of use and long service life. They are designed for direct valves operating (standard key adaptor square 27 mm). The construction elements in telescopic extension spindle are protected from disconnection. The spindles are labelled with producer logo, valve nominal diameter and pipe cover or total length .

### **Materials:**

- spindle – steel
- key adaptor, spindle adaptor –iron EN-GJL 250 (according to PN-EN 1561:2012) or ductile iron EN-GJS 400 (according to PN-EN 1563:2012)
- protection tubes, bottom cover, collar – PE
- split cotter pin, spring pins – steel Fe/Zn or A2 stainless steel
- anti-corrosion protection: steel elements – anti-corrosion paint or galvanised, iron/ductile iron elements – epoxy powder coating

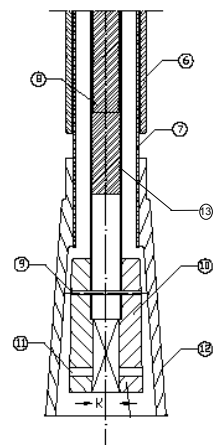
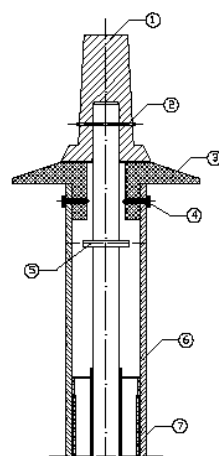


## EXTENSION SPINDLES TELESCOPIC AND RIGID FOR GATE VALVES, SERVICE VALVES AND BUTTERFLY VALVES

DN	Sq.	Rigid extension spindles L (mm)					
		700	1000	1250	1500	2000	2500
Spotting drill	-	x	x	x	x	x	x
25/32	12	x	x	x	x	x	x
40/50	14	x	x	x	x	x	x
65/80	17	x	x	x	x	x	x
100/125/150	19	x	x	x	x	x	x
200	24	x	x	x	x	x	x
250/300	27	x	x	x	x	x	x
350-400	32	x	x	x	x	x	x
500-600	36	x	x	x	x	x	x

DN	Sq.	Telescopic extension spindles L (mm)			
		800/1200	1000/1650	1600/2500	1800/3000
Spotting drill	-	x	x	x	x
25/32	12	x	x	x	x
40/50	14	x	x	x	x
65/80	17	x	x	x	x
100/125/150	19	x	x	x	x
200	24	x	x	x	x
250/300	27	x	x	x	x
350-400	32	x	x	x	x
500-600	36	x	x	x	x

Other lengths and special features available on demand



**Component list:**

- |                           |                          |
|---------------------------|--------------------------|
| 1. Key adaptor            | 2. Spring pin            |
| 3. Collar                 | 4. Screw                 |
| 5. Spring pin             | 6. Upper protection tube |
| 7. Bottom protection tube | 8. Spindle rod           |
| 9. Spring pin             | 10. Spindle adaptor      |
| 11. Split cotter pin hole | 12. Bottom cover         |
| 13. Spindle profile       |                          |